

Ottix shaper



Manufacturer: Diapath Via Savoldini,71- 24057 MARTINENGO- BG- PH +39.0363.986.411 info@diapath.com

CODE	PACKAGING
X0093	1 liter
X0095	2.5 liters
X0096	5 liters
X0097	10 liters
X0098	20 liters

Presentation

Ottix Shaper is an alcoholic anhydrous based mixture, ideal to Ottix Plus use.

Ottix Plus is an innovative reagent: an alcoholic anhydrous component and an aliphatic hydrocarbon mixture aromatic free. In association with Ottix Shaper, it represents an efficacious alternative to alcohols (with different grade) and xylene (or substitutes). It is used in histo-citology routine: in histoprocessing and stain protocols. Good results also in molecular biology protocols.

Ottix Plus is a solution not miscible with water, for this reason it may be used in association with Ottix Shaper in order to have better result and preserve Ottix Plus solution clean for more time.

Composition

Ethanol	CAS No. 64-17-5	EC No. 200-578-6
Basic Blue 9	CAS No. 61-73-4	EC No. 200-515-2

Method

STAIN AND HISTOPROCESSATION USE IN PATHOLOGICAL ANATOMY.

HISTOPROCESSATION:

Formalin ready to use in the first phase of histoprocessor might cause phosphates precipitation with a consequent histoprocessor draining pipe blocking. For this reason, we suggest to insert a storage phase (water) between formalin and Ottix shaper to support possible salt residual solubilization.

Ottix Plus and Ottix Shaper could be used on the histoprocessor present.

HISTOPROCESSATION PROTOCOL

Tank N.°	Reagent	Time (hours)	Temperature (C°)	Vacuum pressure
1.	Formalin 4%			
2	Washing in water	10 min		
3	Ottix Shaper	1h		
4	Ottix Plus	1h	35-37°C	Yes, low
5	Ottix Plus	2h	35-37°C	Yes, low
6	Ottix Plus	2h	35-37°C	Yes, low
7	Ottix Plus	2h	35-37°C	Yes, low
Paraffin 1	Paraffin	1h	58-60°C	Yes, pushed
Paraffin 2	Paraffin	1.30 h	58-60°C	Yes, pushed
Paraffin 3	Paraffin	1.30 h	58-60°C	Yes, pushed

HISTOPROCESSATION PROTOCOL IN ABSENCE OF VACUUM PRESSURE

Tank N.°	Reagent	Time (hour)	Temperature (C°)
1	Formalin		
2	Washing in water	10 min	
2	Ottix Shaper	1h	
3	Ottix Plus	1h	
4	Ottix Plus	2h	
5	Ottix Plus	2h	
6	Ottix Plus	2h	
Paraffin 1	Paraffin	1	58-60°C
Paraffin 2	Paraffin	1.30 h	58-60°C
Paraffin 3	Paraffin	1.30 h	58-60°C

NB. Reagent has an alcohol percentage. To optimize histoprocessing protocol, we suggest to reduce dehydration times as advised. Vacuum/pressure with low values cycles application and 35°C temperature clarification phase can give better results.

HISTOPROCESSATION PROTOCOL (SMALL PIECES- BIOPSIES)

Can N.°	Reagent	Time (min)	Temperature (C°)	Vacuum pressure
1	Ottix Shaper	20 min		
2	Ottix Plus	30 min	35-37°C	
3	Ottix Plus	30 min	35-37°C	
4	Ottix Plus	30 min	35-37°C	
Paraffin 1	Paraffin	30 min	58-60°C	yes
Paraffin 2	Paraffin	30 min	58-60°C	yes

**HISTOPROCESSATION PROTOCOL FOR OPERATOR PICES AND BIOPSIES:
MIXED HISTOPROCESSATION**

Can N.°	Reagent	Time (hour)	Temperature (C°)	Vacuum/pressure
1.	Formalin 4%			
2	Washing in water	10 min		
3	Ottix Shaper	30 min		
4	Ottix Plus	1 h	35-37°C	Yes, low
5	Ottix Plus	1h	35-37°C	Yes, low
6	Ottix Plus	1 h	35-37°C	Yes, low
7	Ottix Plus	2 h	35-37°C	Yes, low
Paraffin 1	Paraffin	1-1.30h	58-60°C	Yes, pushed
Paraffin 2	Paraffin	1.30-2 h	58-60°C	Yes, pushed
Paraffin 3	Paraffin	1.30- 2h	58-60°C	Yes, pushed

STAIN

• Histological samples (IHC and special stain)

DEWAX protocol

- Dry sections in stove at 63°C for 15 minutes
- Dip slides in Ottix Plus for 5 minutes
- Dip slides in Ottix Plus for 5 minutes
- Dip slides in Ottix Shaper for 2 minutes
- Dip slides in Ottix Shaper for 2 minutes
- Dip slides in distilled water for 5 minutes

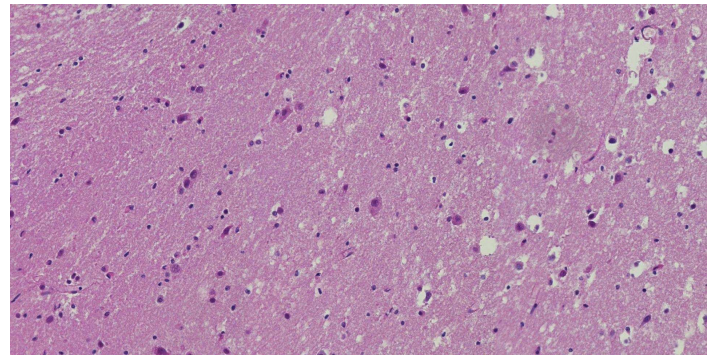
DEHYDRATE AND CLEAR protocol

- Dip slides in Ottix Shaper for 30 sec- 1min
- Dip slides for 5 minutes in Ottix Plus
- Assemble slide as usual, using an assembling mean. Mounting media suggested: DIAMOUNT no toxic and Xylen free.

NOTE: Don't leave the slides in Ottix Plus more than 20 min before mounting

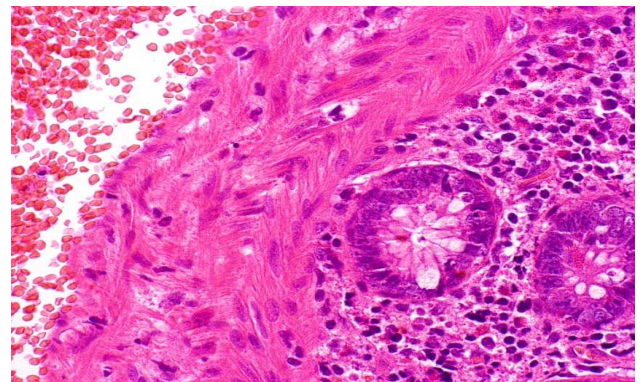
Example for protocol of Haematoxylin- eosin water based

1. Ottix Plus for 7 min
2. Ottix Plus for 7 min
3. Ottix Shaper for 7 min
4. Water for 5 min
5. Hematoxylin from 1 min to 10 min
6. Running water for 5-10 min
7. Water eosin 2-3 min (if acetified 1-2 min)
8. Running water for 2-5 min
9. Ottix Shaper for 30 sec
10. Ottix Shaper for 1 min
11. Ottix Plus for 5 min
12. Ottix Plus for 5 min



Example for protocol of Haematoxylin- eosin alcohol based

13. Ottix Plus for 7 min
14. Ottix Plus for 7 min
15. Ottix Shaper for 7 min
16. Water for 5 min
17. Hematoxylin for 1-10 min
18. Running water for 5-10 min
19. Ottix Shaper for 1-2 min
20. Alcoholic eosin 30sec-1 min
21. Ottix Shaper for 30 sec
22. Ottix Shaper for 30 sec
23. Ottix Plus for 5 min
24. Ottix Plus for 5 min



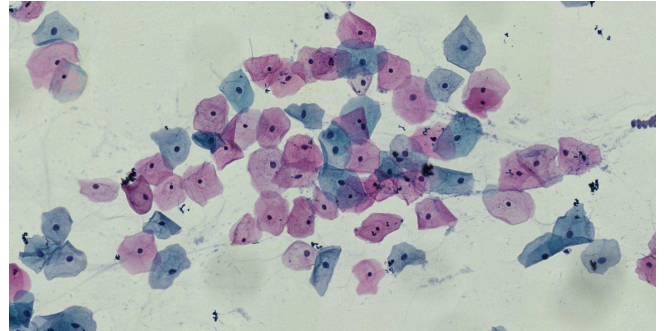
NOTE: Don't leave the slides in Ottix Plus more than 20 min before mounting

MOUNTING MEDIA:

Ottix plus is compatible with the mounting media xylene based.
We suggest to use Diamount mounting media xylene and toluene free.
It is no toxic and suitable for manual or automatic coverslipper.

Cytological sample: example of Papanicolaou protocol stain for smear

- | | |
|-----------------------|------------------|
| 1. Ottix Shaper | 2 -5 min |
| 2. Water | 5 min |
| 3. Harris hematoxylin | for 30 sec-1 min |
| 4. Running water | 5 min |
| 5. Ottix Shaper | 2 min |
| 6. Orange G | for 30 sec-1 min |
| 7. Ottix Shaper | for 2 min |
| 8. Ottix Shaper | for 2 min |
| 9. EA50 | 30 for sec-1 min |
| 10. Ottix Shaper | for 2 min |
| 11. Ottix Shaper | for 2 min |
| 12. Ottix Plus | for 5 min |
| 13. Ottix Plus | for 5 min |



NOTE: Don't leave the slides in Ottix Plus more than 20 min before mounting.

MOUNTING MEDIA:

Ottix Plus is compatible with the mounting media xylene based.
We suggest to use Diamount mounting media xylene and toluene free.
It is no toxic and suitable for manual or automatic coverslipper.

Storage, handling and stability

Store at room temperature. Keep container tightly closed. Keep away from sources of ignition-No smoking. The product, if properly stored and unopened package is valid given on the label. Professional use. For more information, please see MSDS. Avoid direct exposure to the sun. Changes in color tone does not alter the performance of the product.